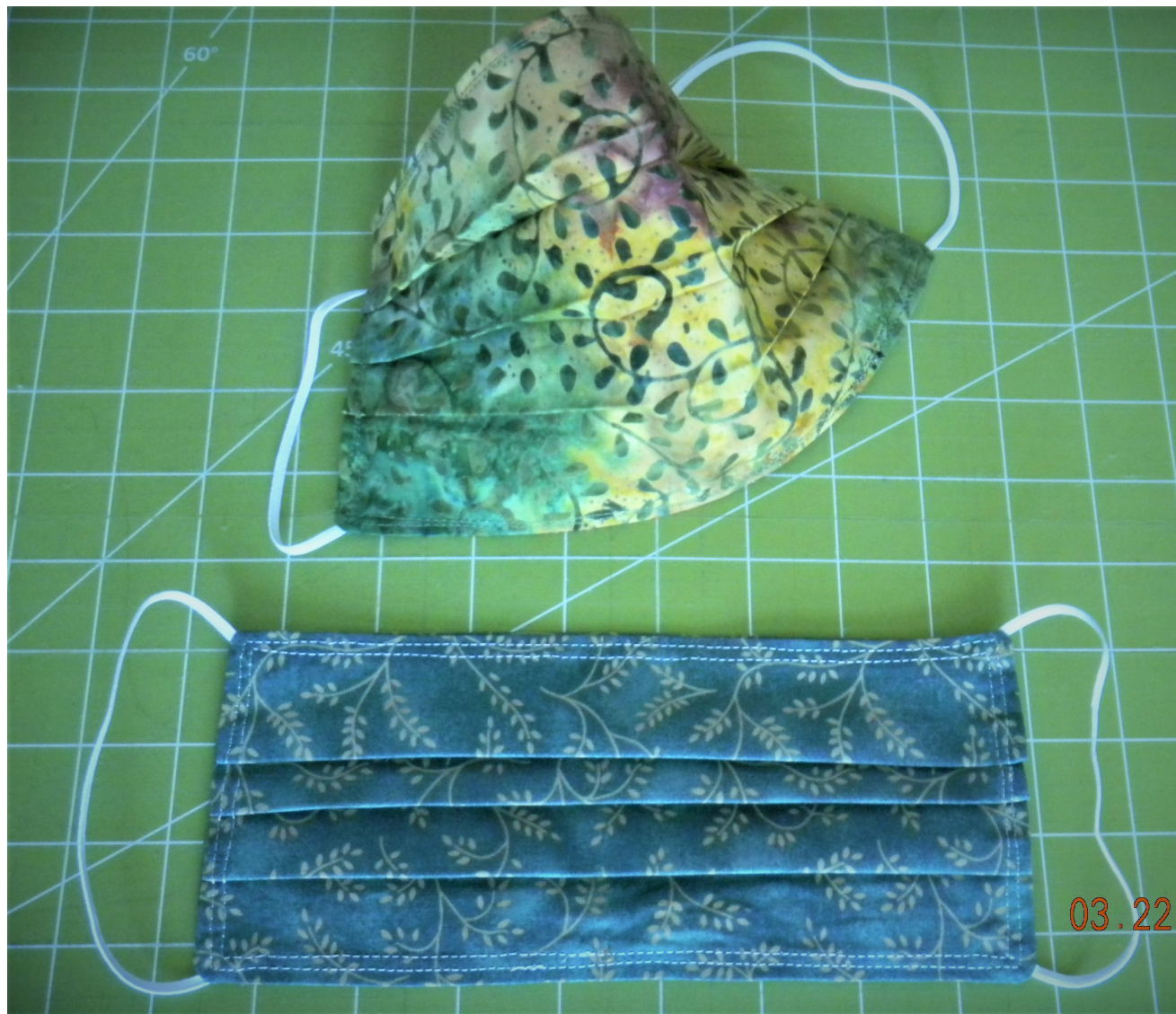


Hi!

GO! Face Mask

Finished Size: 6" x 9"





Dies Needed:

GO! Strip Cutter – 6-1/2” (6” Finished) (55086)

Additional Items

- Rope elastic, beading cord elastic, 1/8” or 1/4 “ flat elastic will also work.
- Rotary Cutter, ruler, scissors

Fabric Requirements:

Fabric Color	Total Yardage
Assorted Fabric	1/4 yard of each fabric selection will yield 2 masks 1 Fat Quarter will yield 3 masks Choose bright & cheery prints, but don't forget some manly colors!

Cutting Directions:

Fabric Color	Die	Number of Shapes to Cut
Fabric of Choice	GO! Strip Cutter – 6-1/2” (55086)	Fanfold fabric and cut strips – up to 6 layers being mindful if there is a horizontal pattern to the fabric; that it is running in the long direction.
Fabric of Choice		Rotary cut strips to 9-1/2”
Elastic		Scissor cut elastic at 7” Cut 2
Abbreviations	RST	Right Sides Together

Sewing Directions:

Use 1/4" seams, unless otherwise indicated.

NOTE: Directions will be for one 9" x 4" finished mask.

1. With RST take 2 6-1/2" x 9-1/2" pieces of fabric (**Figure 1**), and start sewing across 1 long edge taking a 1/4" seam. Sew as far as one corner, stopping about 1/4" away from the corner.
2. Fold top layer back to expose corner. Take one of the 2 7" pieces of elastic. If using cord, first tie a not in each end. If using flat elastic place the elastic so that it extends a little beyond the corner. Stitch back and forth over the elastic a couple of times to secure. Continue stitching to the next corner. (**Figure 2**)
3. Take the end of the elastic sewn to the first corner, and bring to the second corner, and stitch as before to secure. (**Figure 3**)
4. Stitch along second long edge to the next corner and repeat Step 2 with the elastic. (**Figure 4**)

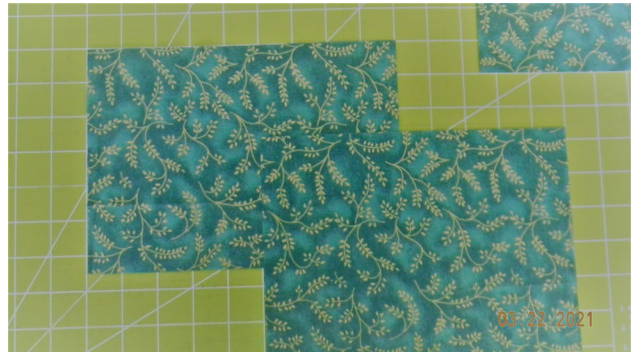


Figure 1



Figure 2



Figure 3

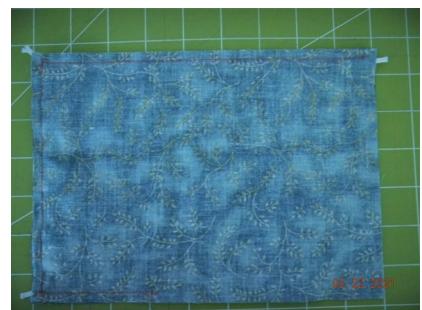


Figure 4

5. Stitch to final corner and repeat Step 3. (Figure 5)



Figure 5

6. Continue stitching to within 2" of where you started. Backstitch to secure. (Figure 6)

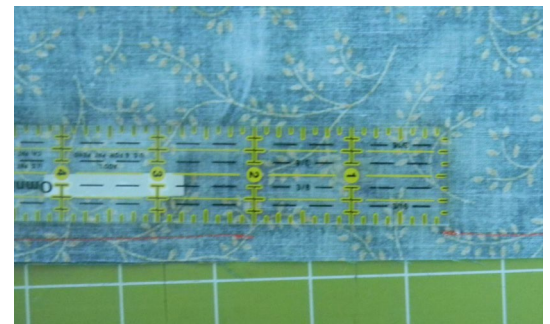


Figure 6

7. Turn mask right side out and lightly press to get crisp edges and corners.
8. Measuring from the top, make pressed creases at approximately 1", 2-3/4" and 4". Fold each of these down to form tucks of about 1/4". (Figure 7)



Figure 7

9. Pin in place. (Figure 8)



Figure 8

10. Starting anywhere along one of the long edges; stitch close to the edge all around the mask and through the tucks, being careful not to flip them. Stitch again about 1/8" away from 1st stitching. This will close up the opening along the one edge.

(Figure 9)

11. You have completed your mask! This is a fun and fast project.



Figure 9