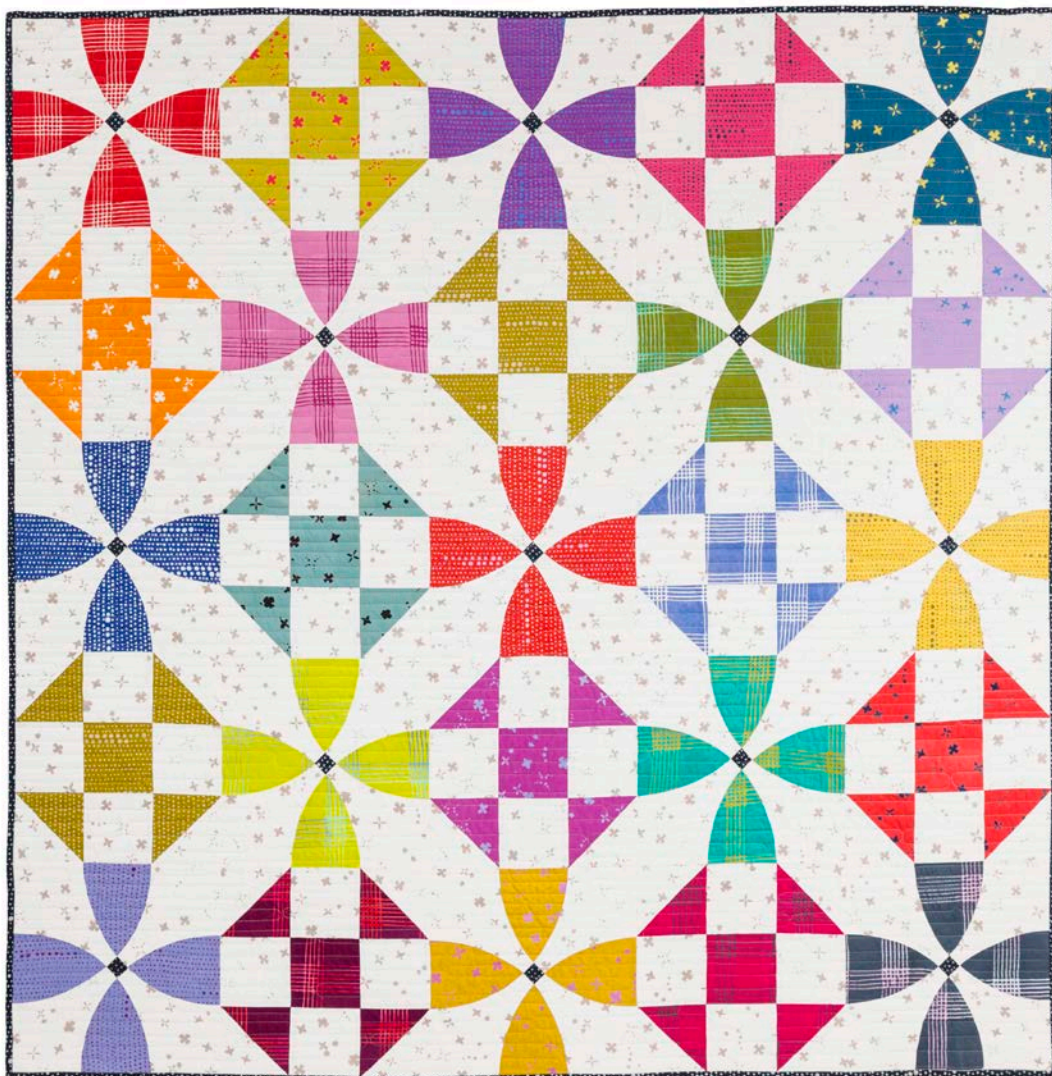


GO! Qube 8" Happy Village Quilt

Finished Size: 60" x 60"

*Fabrics are from the
"Chroma by Alison
Glass" Collection
and are provided
by Andover Fabrics*



Dies Needed:

GO! Qube Mix & Match 8" Block (55776)

- GO! Square-4½" (4" Finished) (Shape 1)
- GO! Half Square Triangle-4" Finished Square (Shape 3)




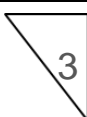
Additional Dies Needed:

- GO! Flowering Snowball-12" Finished (55252)
- GO! Strip Cutter-2½" (2" Finished) (55017 or 55014)

Fabric Requirements:

| Fabric Color | Total Yardage |
|--------------|---|
| Beige | 4 yards |
| Charcoal | 5/8 yard |
| Fat Quarter | 25 Fat Quarters (12 for Shoo Fly Block & 13 for Flowering Snowball Block) |
| Batting | 65" x 65" |
| Backing | 4 yards |

Cutting Directions:

| Fabric Color | Shape & Number | Number of Shapes to Cut | Total Fabric Required |
|--------------|---|--|------------------------|
| Beige |  | Cut 6—5" x width of fabric (WOF) strips. Fanfold into 5" widths. Sub cut into 48—4" finished squares. | 4 yards |
| Beige |  | Cut 4—5¼" x WOF strips. Fanfold into 5¼" widths. Sub cut into 48—4" finished half square triangles (HSTs). | Yardage included above |
| Beige | GO! Flowering Snowball (55252) | Cut 6—13½" x WOF strips. Place on concave shape on die. Fanfold into 7¼" widths. Sub cut into 52—concave pieces. | Yardage included above |
| Fat Quarter |  | Cut 1—5" x 5" square from each of 12 fat quarters. Place up to 6 layers on die and sub cut into 1—4" finished square from each fat quarter. | 12 Fat Quarters |
| Fat Quarter |  | Cut 1—5¼" x 10½" rectangle from each of 12 fat quarters used above. Fanfold into 5¼" widths. Sub cut into 4—4" finished HSTs from each fat quarter. | Yardage included above |
| Fat Quarter | GO! Flowering Snowball (55252) | Cut 1—9" x 13" rectangle from each of 13 fat quarters. Place on convex shape on die. Fanfold into 6½" widths. Sub cut into 4—convex pieces from each of 13 fat quarters. | 13 Fat Quarters |
| Charcoal | GO! Flowering Snowball (55252) | Cut 1—2" x WOF strip. Fanfold into 2" widths. Sub cut into 13—flowering snowball square centers. | 5/8 yard |

Additional Cutting Instructions:

- Charcoal—Yardage included above
 - Use GO! Strip Cutter-2½" (2" Finished) (55017 or 55014) to cut 7—2½" x WOF strips for binding.

Additional Fabrics Needed:

- Batting: at least 65" x 65"
- Backing: 4 yards cut into 2—72" x width of fabric (WOF) pieces. Sew back together along the 72" length. Trim selvages and press seams open.





Sewing Directions:

Press all seams open and use ¼" seams, unless otherwise indicated.

NOTE: Refer to the individual block instructions to make a total of 12—12" Finished Shoo Fly Blocks and 13—12" Finished Flowering Snowball Blocks.

Shoo Fly Block

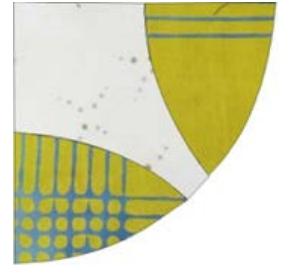
NOTE: Directions will be for one 12" finished block. Make 12 different colored blocks.

1. Sew one beige and one pink 4" finished half square triangle (HST) (Shape 3) together as shown. Press seams open. Make 4 HST units. 
2. Sew one HST unit to each side of one beige 4" finished square (Shape 1) as shown. Press seams open. Make a total of 2—one top row and one bottom row per block. 
3. Sew one beige 4" finished square (Shape 1) to each side of one pink 4" finished square (Shape 1) as shown. Press seams open. Make one center row. 
4. Sew one top row to the top of the center row. Press seams open. Sew one bottom row to the bottom of the center row. Press seams open. Make 1—12" Finished Shoo Fly Block. Repeat with remaining 12 fat quarter colors. 

Flowering Snowball Block

NOTE: Directions will be for one 12" finished block. Make 13 different colored blocks.

1. Place one beige concave flowering snowball piece on top of one fat quarter convex flowering snowball piece right sides together. Line up notches and pin. Stitch by easing beige concave piece while sewing. Press seams towards fat quarter convex piece. Repeat on opposite side of beige concave piece by adding another fat quarter convex piece. Press seams towards convex piece. Make two side sections as shown.
2. Sew short side of one beige concave flowering snowball piece to one charcoal square. Repeat with a second beige concave flowering snowball piece and attach to the other side of the charcoal square to make one center section as shown.
3. Place center section right sides together to one side section. Pin at top, notches, seam intersections and bottom. Stitch, easing in center section as you sew. Press seams toward side section. Repeat with remaining side section. Make 1—12" Finished Flowering Snowball Block as shown. Repeat with remaining 13 fat quarter colors.



Assemble the Quilt Top

1. Lay out blocks in 5 rows of 5 blocks each as shown in quilt diagram. Sew blocks together into rows. Press seams to one side.
2. Sew rows together. Press seams in opposite directions.

Quilting and Finishing

1. Layer batting between quilt top and backing.
2. Pin or baste layers together.
3. Quilt as desired.
4. Add binding, mitering corners.

