

Baby Baby by V-Stitch

Machine embroidery appliqué set

Can be used with Accuquilt GO!™ Baby Baby (55037)

This machine embroidery appliqué set is designed to be used with the Accuquilt GO!™ Baby Baby (55037).

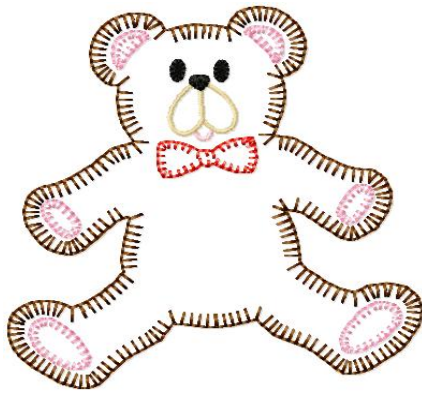
12 designs included in this set. There are 6 bears and 6 ducks. The designs have a variety of appliqué edges.

Hoop size for all designs must be 5 X 7 or larger. Name and design size information is provided on the following pages.

Actual size templates are included so you can cut your fabric by hand.

The designs may be stitched in one thread color, but there are stops to allow for thread color changes for each appliqué shape and each embellishment.





Bear 1 3 (15/16)" X 4 (1/16)"

- | | |
|--------------------------------|-------------------|
| 1. bear placement | 11. cheeks |
| 2. bear tackdown | 12. eyes and nose |
| 3. bear applique edge | |
| 4. ears and paws placement | |
| 5. ears and paws tackdown | |
| 6. ears and paws applique edge | |
| 7. bow tie placement | |
| 8. bow tie tackdown | |
| 9. bow tie applique edge | |
| 10. mouth | |



Bear 2 4 (1/16)" X 4 (3/16)"

- | | |
|--------------------------------|-------------------|
| 1. bear placement | 11. cheeks |
| 2. bear tackdown | 12. eyes and nose |
| 3. bear applique edge | |
| 4. ears and paws placement | |
| 5. ears and paws tackdown | |
| 6. ears and paws applique edge | |
| 7. bow tie placement | |
| 8. bow tie tackdown | |
| 9. bow tie applique edge | |
| 10. mouth | |



Bear 3 4 (3/16)" X 4 (1/4)"

- | | |
|--------------------------------|----------------------|
| 1. bear placement | 11. bow tie applique |
| 2. bear tackdown | 12. mouth |
| 3. bear applique edge | 13. cheeks |
| 4. spiral on tummy | 14. eyes and nose |
| 5. design around spiral | |
| 6. ears and paws placement | |
| 7. ears and paws tackdown | |
| 8. ears and paws applique edge | |
| 9. bow tie placement | |
| 10. bow tie tackdown | |



Bear 4 4 (3/16)" X 4 (5/16)"

- | | |
|--------------------------------|-------------------|
| 1. bear placement | 11. cheeks |
| 2. bear tackdown | 12. eyes and nose |
| 3. bear applique edge | |
| 4. ears and paws placement | |
| 5. ears and paws tackdown | |
| 6. ears and paws applique edge | |
| 7. bow tie placement | |
| 8. bow tie tackdown | |
| 9. bow tie applique edge | |
| 10. mouth | |



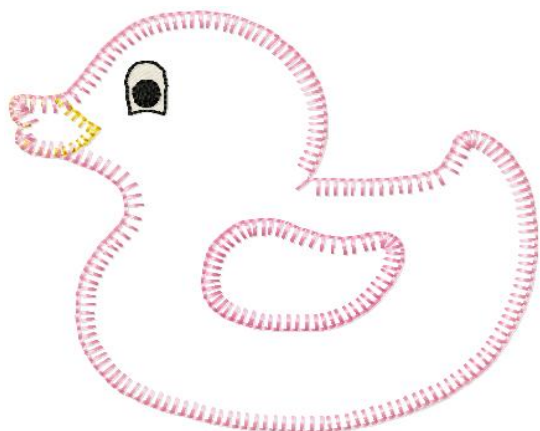
Bear 5 4 (3/16)" X 4 (7/16)"

- | | |
|----------------------------|-------------------|
| 1. bear placement | 11. bow tackdown |
| 2. bear tackdown | 12. bow applique |
| 3. bear applique edge | 13. tutu |
| 4. ears and paws placement | 14. tutu outline |
| 5. ears and paws tackdown | 15. heart pendant |
| 6. ears and paws applique | 16. necklace |
| 7. tongue | |
| 8. cheeks | |
| 9. eyes, nose, mouth | |
| 10. bow placement | |



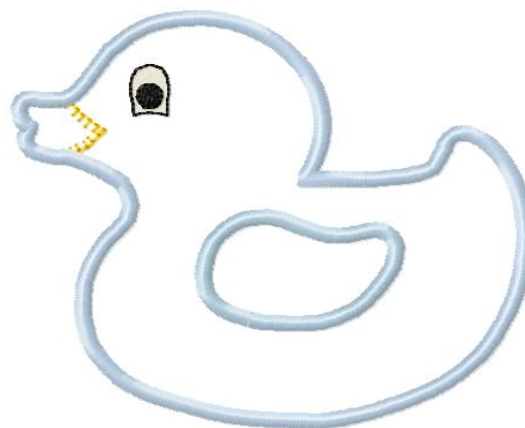
Bear 6 4 (3/16)" X 5 (1/4)"

- | | |
|--------------------------------|--------------------------|
| 1. bear placement | 11. bow tie placement |
| 2. bear tackdown | 12. bow tie tackdown |
| 3. bear applique edge | 13. bow tie applique |
| 4. ears and paws placement | 14. balloon ribbon |
| 5. ears and paws tackdown | 15. balloon |
| 6. ears and paws applique | 16. highlight on balloon |
| 7. buttons | 17. hat |
| 8. tongue | 18. hat embellishment |
| 9. cheeks | |
| 10. eyes,nose, mouth, ,buttons | |



Duck 1 4 (3/8)" X 3(7/8)"

1. duck placement
2. duck tackdown
3. beak placement
4. beak tackdown
5. duck applique edge
6. wing placement
7. wing tackdown
8. wing applique edge
9. eye
10. eyeball



Duck 2 4 (1/2)" X 4"

1. duck placement
2. duck tackdown
3. beak placement
4. beak tackdown
5. duck applique edge
6. wing placement
7. wing tackdown
8. wing applique edge
9. eye
10. eyeball



Duck 3 4 (9/16)" X 6 (1/4)"

- | | |
|-----------------------------------|---------------|
| 1. duck placement | 12. eyeball |
| 2. duck tackdown | 13. eyelashes |
| 3. beak placement | 14. cheek |
| 4. beak tackdown | 15. bow |
| 5. tail | 16. bubbles |
| 6. curls | |
| 7. duck applique edge | |
| 8. wing placement | |
| 9. wing tackdown | |
| 10. wing applique & embellishment | |
| 11. eye | |



Duck 4 4 (9/16)" X 5 (1/16)"

- | | |
|-----------------------------------|-------------|
| 1. duck placement | 12. cheek |
| 2. duck tackdown | 13. eye |
| 3. beak placement | 14. eyeball |
| 4. beak tackdown | 15. waves |
| 5. grass | 16. hat |
| 6. bottom of ca tail | 17. anchor |
| 7. top of cattail | |
| 8. duck applique edge | |
| 9. wing placement | |
| 10. wing tackdown | |
| 11. wing applique & embellishment | |



Duck 5 4 (5/8)" X 5(1/4)"

- | | |
|-----------------------------------|------------------------------|
| 1. duck placement | 11. eye |
| 2. duck tackdown | 12. fish |
| 3. beak placement | 13. fish |
| 4. beak tackdown | 14. fish |
| 5. tail | 15. waves |
| 6. curls | 16. cheek |
| 7. duck applique | 17. eyeballs for duck & fish |
| 8. wing placement | |
| 9. wing tackdown | |
| 10. wing applique & embellishment | |



Duck 2 4 (9/16)" X 6 (1/8)"

- | | |
|----------------------------------|------------------------------|
| 1. duck placement | 11. fish |
| 2. duck tackdown | 12. fish |
| 3. beak placement | 13. eyeballs for duck & fish |
| 4. beak tackdown | 14. waves |
| 5. duck applique edge | 15. cheek |
| 6. wing placement | 16. heart |
| 7. wing tackdown | 17. bubbles |
| 8. wing applique & embellishment | |
| 9. eye | |
| 10. fish | |

Copyright notice: All designs herein are the original creations of V–Stitch and may not be distributed in any format or by any method. You may not re-sell, share, transfer or distribute these designs to others for any reason. These designs may not be mass produced for sale for profit.

By purchasing this design set you are purchasing a license to use the designs for personal use including making items for gifts, charity and for sale for profit. You may modify or edit the design file, but the modified file retains the copyright stated above and may not be distributed in any manner.



All shape designs ©1990-2011 by AccuQuilt. AccuQuilt®, AccuQuilt GO!®, GO!® and GO! Baby™ are registered trademarks of AccuQuilt. Used with permission.

Applique shape preparation

If using fusible web attach the fusible web to the wrong side of fabric before cutting out. Follow manufacturer's instructions to apply.

Cut out shape using template provided or cut out using your Accuquilt GO!™

If using acid free glue stick rub a light coating of glue on the background fabric inside the placement line.

Stitching the Applique

Every file will stitch a placement line first. This shows you where to place your cutout or your piece of fabric.

If using a piece of fabric you will trim the fabric once your tack down stitch has finished stitching.

If using a cut out shape fit the appliqué exactly inside or on top of placement lines.

The designs may be stitched in one thread color, but there are stops to allow for thread color changes for each appliqué shape and each embellishment.

Placement stitches will not show at all through a satin stitch but may be seen through an appliqué or other decorative stitch.

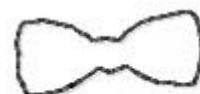
Be sure to place shapes in the order of stitching so that any shapes that overlap will stitch correctly.

The thread colors used here are only for illustration. Feel free to use colors that are pleasing to you.

Using the Accuquilt GO!™ Cutter makes this a project easy to do.

The AccuQuilt GO!™ dies and GO! Fabric Cutter must be purchased separately.

Find more designs at www.etsy.com/shop/VStitchDesigns

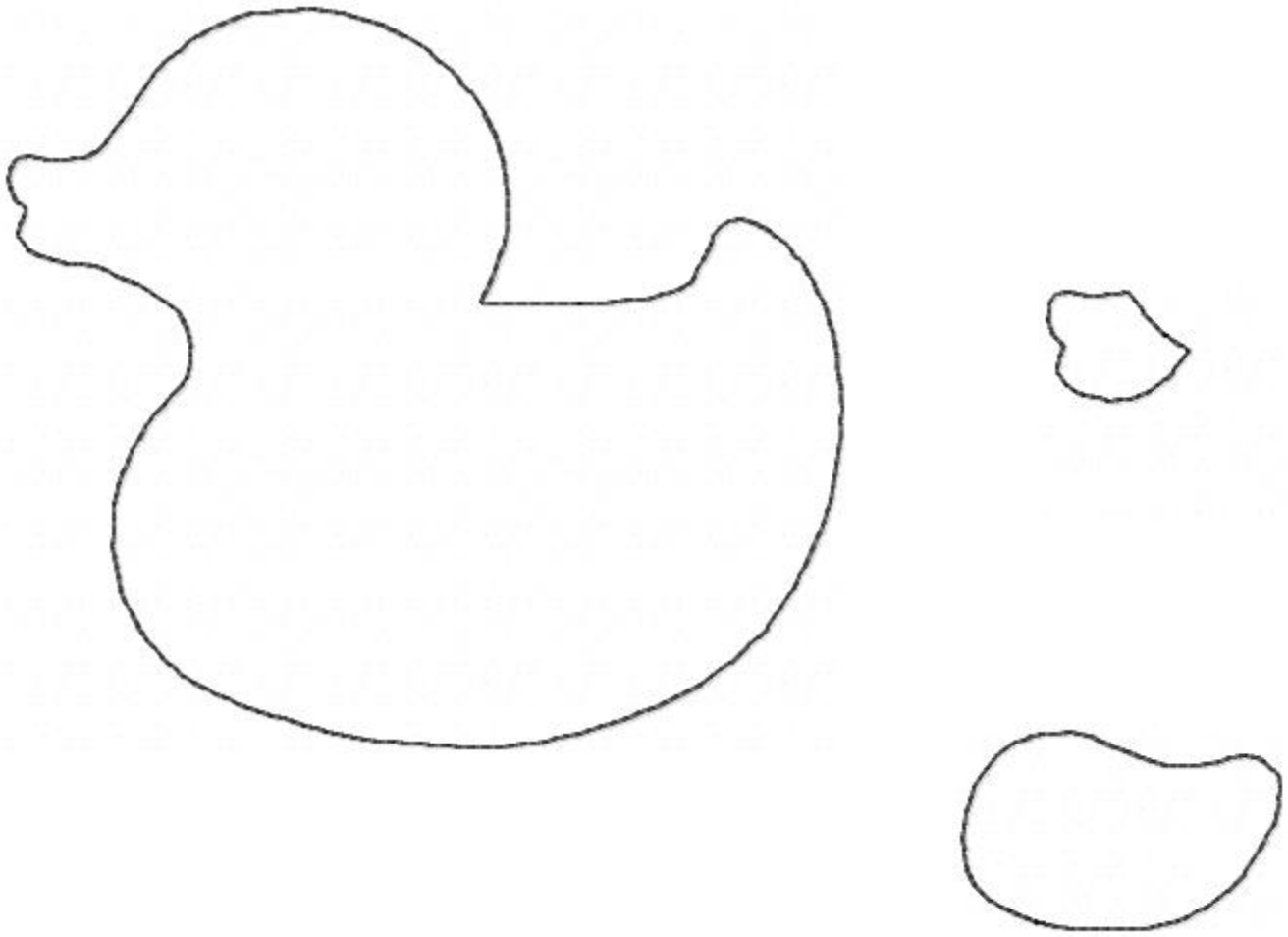


Baby Baby (55037)

Shape design ©1990-2011 by AccuQuilt.

All shape designs ©1990-2012 by AccuQuilt. AccuQuilt®, AccuQuilt GO!®, GO! ® and GO! Baby™ are registered trademarks of AccuQuilt. Used with permission.

When printing this template, set page scaling to None.



Baby Baby (55037)

Shape design ©1990-2011 by AccuQuilt.

All shape designs ©1990-2012 by AccuQuilt. AccuQuilt®, AccuQuilt GO!®, GO! ® and GO! Baby™ are registered trademarks of AccuQuilt. Used with permission.

When printing this template, set page scaling to None.