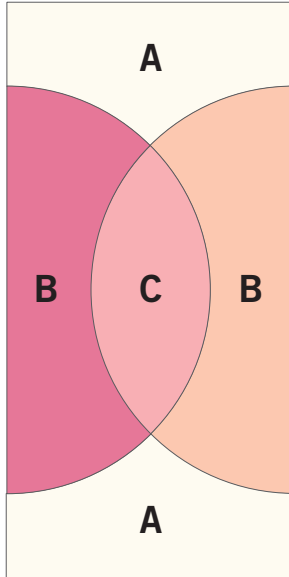




GO!® Local Color by Bill Kerr

Item Number: 55452

Fabric Cutting Tips for a 3-color, Local Color block:



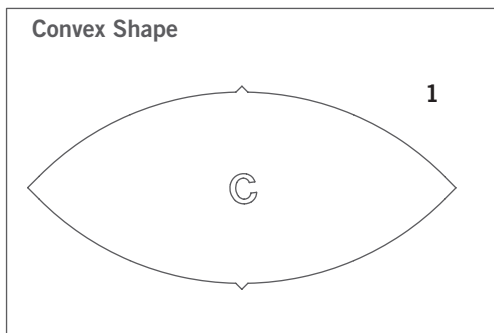
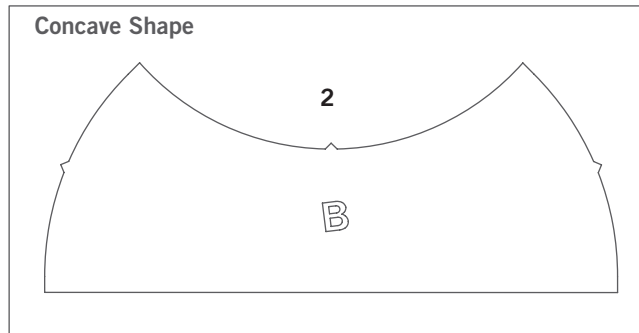
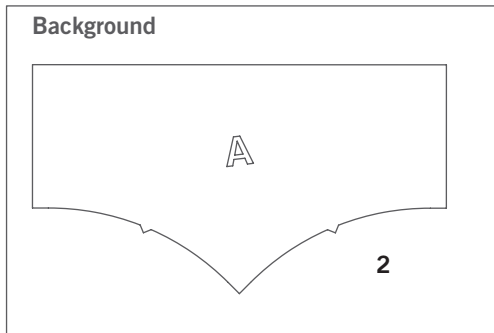
Place fabric over shapes then run through the cutter:

For best cutting results, position fabric on the lengthwise grain (straight of grain) as it goes under the roller.

TIP: For three complete 4-color blocks, cut six layers of background fabric (A), three layers each of two different fabric colors (B) and three layers of fabric (C).

- **Shape A – Block Background:** Cut a 7" strip across the width of fabric. Fanfold into 4¹/₈" widths. Place on selected blade and cut. Cut nine A shapes across the width of fabric. One yard of 40" wide fabric cuts 45, A shapes.
- **Shape B – Concave Shape:** Cut a 9¹/₂" strip across the width of fabric. Fanfold into 4" widths. Place on selected blade and cut. Cut 10, B shapes across the width of fabric. One yard of 40" wide fabric cuts 30, B shapes.
- **Shape C – Convex Shape:** Cut a 7¹/₄" strip across the width of fabric. Fanfold into 3³/₄" widths. Place on selected blade and cut. Cut 10, C shapes across the width of fabric. One yard of 40" wide fabric cuts 40, C shapes.

Shapes needed for Local Color



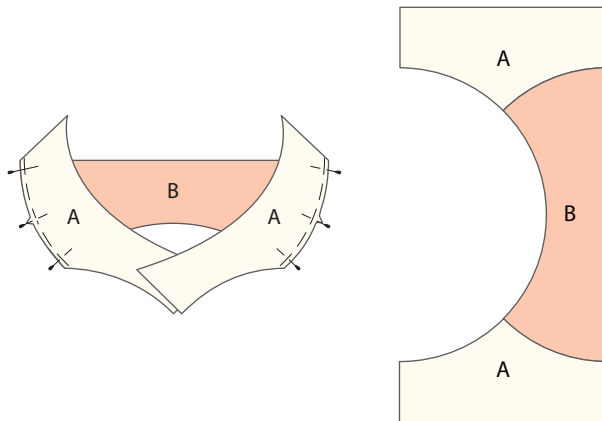


GO!® Local Color by Bill Kerr

Item Number: 55452

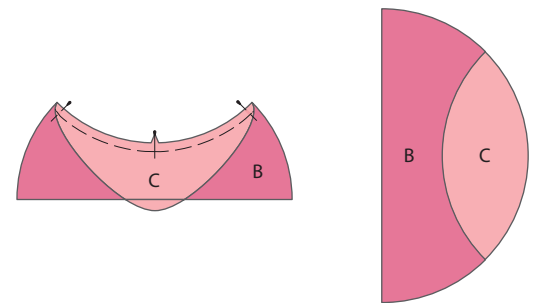
How to Sew the Local Color Quilt Block:

Step 1



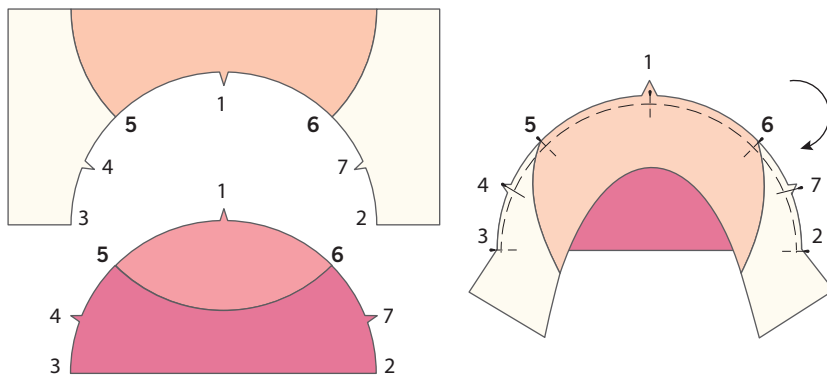
With right sides facing, pin the top curved edges of A pieces to each side of B piece, lining up notches as shown. With A pieces facing up, sew together (keeping the B piece on the bottom prevents puckers.) Press seams open.

Step 2



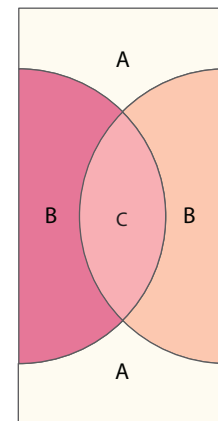
With right sides facing, pin the bottom edge of C piece to the top cutout of another B piece, lining up notches as shown. Sew with C piece on the bottom to prevent puckers. Press the seams open.

Step 3



Place the two pieced units, right-side up. Turn the ABA piece upside down so its right side faces the right side of the BC semi-circle. Align, pinning at notches, seams and ends as shown. Sew with the BC unit facing up. Press the seams open.

Step 4



Local Color block measures $6\frac{1}{2}'' \times 12\frac{1}{2}''$.



GO!® Local Color by Bill Kerr

Item Number: 55452

Local Color Quilt Block Coloring Page

Print out and color as desired to test out different color and fabric combinations.

