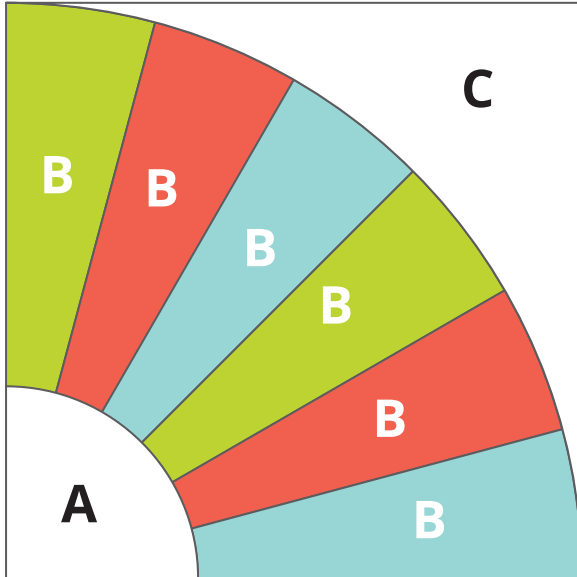




# GO!® Grandmother's Fan-9" Finished

Item Number: 55537

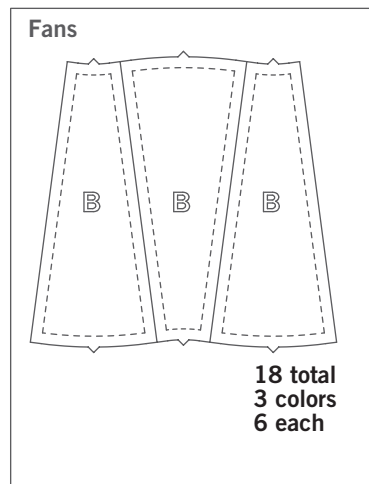
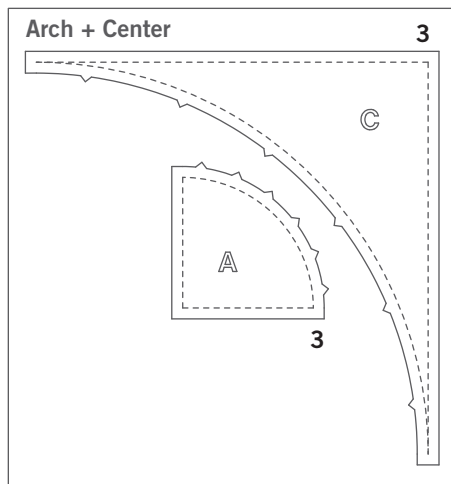
## Fabric Cutting Tips for three 4-color, 9" finished Grandmother's Fan blocks:



Place fabric over shapes then run through the cutter:

- **Fabric Color 1:** Cut three 10" squares. Place right side up over shapes A and C to cut.
- **Fabric Color 2:** Cut two 7 $\frac{5}{8}$ " x 7 $\frac{1}{2}$ " rectangles. Place right side up over shapes B to cut.
- **Fabric Color 3:** Cut two 7 $\frac{5}{8}$ " x 7 $\frac{1}{2}$ " rectangles. Place right side up over shapes B to cut.
- **Fabric Color 4:** Cut two 7 $\frac{5}{8}$ " x 7 $\frac{1}{2}$ " rectangles. Place right side up over shapes B to cut.

Shapes needed for 9" finished Grandmother's Fan (Note: Die designed to cut 3 complete blocks in one pass through the cutter)





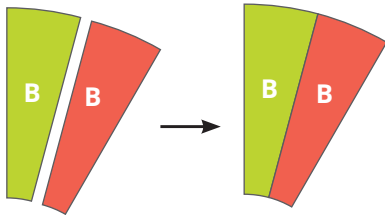
# GO!® Grandmother's Fan-9" Finished

Item Number: 55537

## How to Sew the 4-color, 9" finished Grandmother's Fan Block:

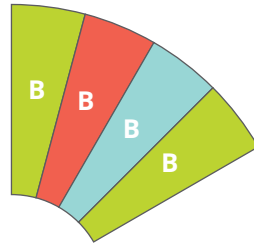
Use a 1/4" seam allowance. Press as directed.

### Step 1



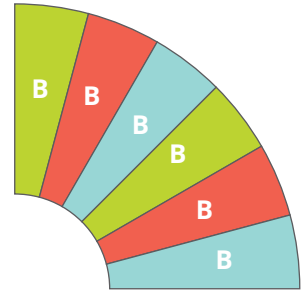
Sew two B shapes together to make a B/B unit. Make 3 in colors shown.

### Step 2



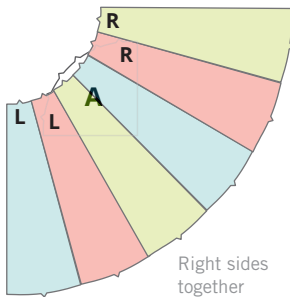
Sew two B/B units together as shown, press seams open.

### Step 3



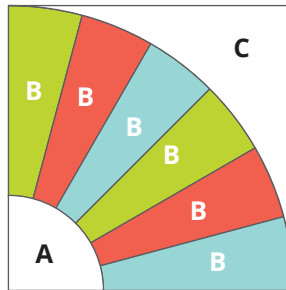
Sew B/B/B/B unit and B/B unit together as shown, press seams open.

### Step 4



Lay fan shape on top of A quarter circle shape, right sides together, matching notches. Pin together at notches. Aligning raw edges, match L corners and pin. Match R corners and pin. Matching raw edges; add pins, as needed to ensure a smooth seam.

### Step 5



Using a consistent 1/4" seam allowance and matching notches, sew C shape to completed arch unit. Stretch or ease fabrics as needed.

Block should measure 9 1/2" square.



# GO!® Grandmother's Fan-9" Finished

Item Number: 55537

## Grandmother's Fan Quilt Block Coloring Page

Print out and color as desired to test out different color and fabric combinations.

