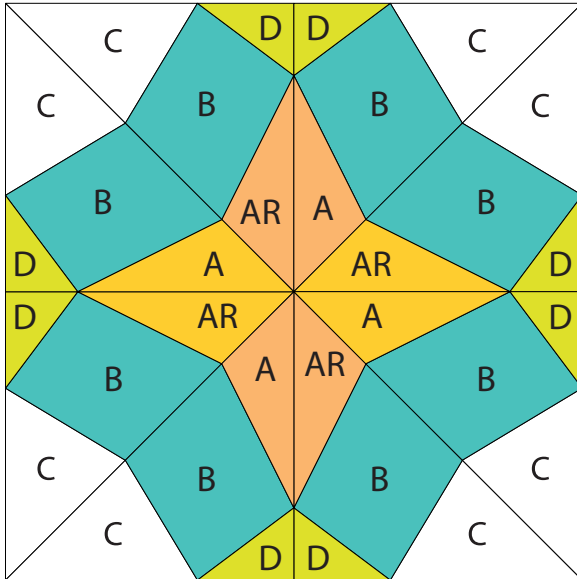




GO!® Full Blown Tulip-8" Finished

Item Number: 55616

Fabric Cutting Tips for one 5-color, 8" finished Full Blown Tulip block:



Shapes needed for 8" finished Full Blown Tulip Block

Place fabric over shapes then run through the cutter:

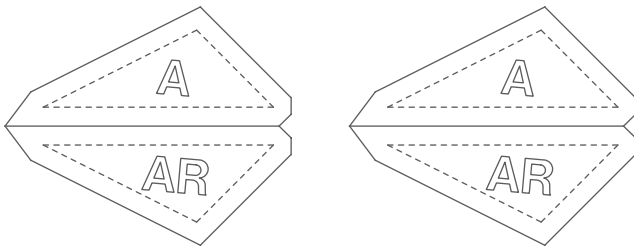
For best cutting results, position fabric on the lengthwise grain (straight of grain) as it goes under the roller. Tip: The die is specially designed to cut one complete 5-color 8" finished block in one pass through the cutter.

- **Fabric Color 1 (orange):** Cut A and AR shapes together. Cut two 3¾" x 4¼" rectangles. Place right side up over shapes A and AR to cut two of each shape.
- **Fabric Color 2 (yellow):** Cut A and AR shapes together. Cut two 3¾" x 4¼" rectangles. Place right side up over shapes A and AR to cut two of each shape.
- **Fabric Color 3 (teal):** Cut two 5¾" x 11" rectangles. Fanfold into four layers and place over shapes B to cut four mirrored B rectangle sets (8 total shapes).
- **Fabric Color 4 (white):** Cut four 4¾" x 3" rectangles. Place right side up over shapes C to cut four mirrored C triangle sets (8 total shapes). Note: Shapes face each other on the die board so do not fanfold fabric.
- **Fabric Color 5 (green):** Cut two 2¾" x 6" rectangles. Fanfold into four layers and place over shapes D to cut four mirrored D triangle sets (8 total shapes).

Center Triangles cut together (Orange & Yellow)

4 Orange (2 A's & 2 AR's) 4 Yellow (2 A's & 2 AR's)

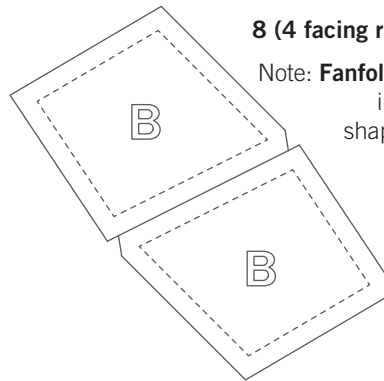
Note: **Layer rough cut fabric right sides up** over A & AR shapes. Do not fanfold.



Petals (Teal)

8 (4 facing right, 4 facing left)

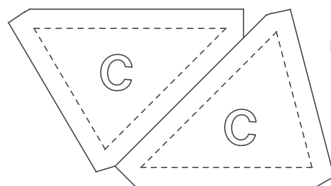
Note: **Fanfold rough cut fabric** into 4 layers over B shapes to get mirrored rectangle sets.



Background (White)

8 (4 facing right, 4 facing left)

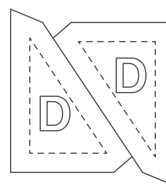
Note: **Layer rough cut fabric right sides up** over C shapes. Do not fanfold.



Small Triangle (Green)

8 (4 facing right, 4 facing left)

Note: **Fanfold rough cut fabric** into 4 layers over D shapes to get mirrored rectangle sets.





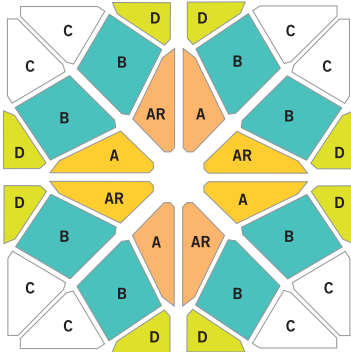
GO!® Full Blown Tulip-8" Finished

Item Number: 55616

How to Sew the 5-color, 8" finished Full Blown Tulip Block:

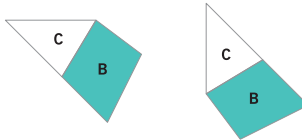
Read through assembly instructions before starting sewing. Use a 1/4" seam allowance. Press seams open unless otherwise directed in pattern.

Step 1



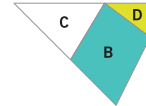
Remove the cut pieces from the die and lay out one block as shown. **Make sure the corners on the shapes match the diagram.**

Step 2



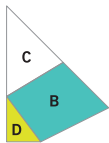
Sew pieces C and B together as shown. Make 4 C/B horizontal units and 4 C/B vertical units.

Step 3



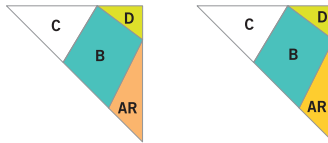
Sew piece D to C/B unit as shown. Make 4 D/C/B horizontal units.

Step 4



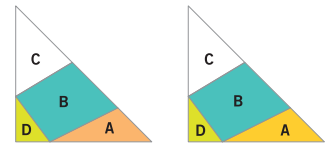
Sew piece D to C/B unit as shown. Make 4 D/C/B vertical units.

Step 5



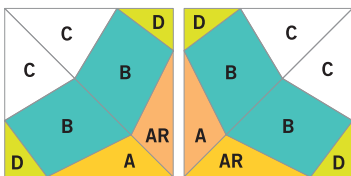
Sew orange piece AR to D/C/B unit as shown. Make 2 orange AR/D/C/B horizontal units. Sew yellow piece AR to D/C/B unit as shown. Make 2 yellow AR/D/C/B horizontal units.

Step 6



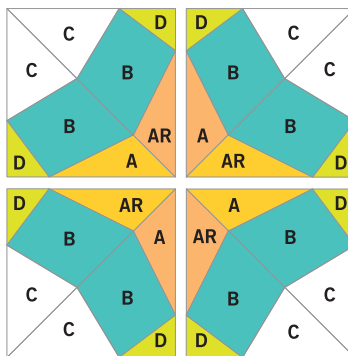
Sew orange piece A to D/C/B unit as shown. Make 2 orange A/D/C/B vertical units. Sew yellow piece A to D/C/B unit as shown. Make 2 yellow A/D/C/B vertical units.

Step 7



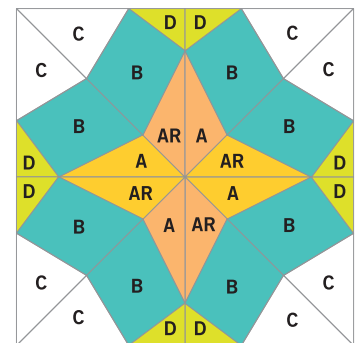
Sew yellow A/D/C/B unit with orange AR/D/C/B unit together to make a quarter unit. Make 2. Sew orange A/D/C/B unit with yellow AR/D/C/B unit together to make a quarter unit. Make 2.

Step 8



Sew quarter units into rows, then sew rows together to complete block.

Step 9



Block should measure 8 1/2" x 8 1/2".



GO!® Full Blown Tulip-8" Finished

Item Number: 55616

Full Blown Tulip Quilt Block Coloring Page

Print out and color as desired to test out different color and fabric combinations.

