

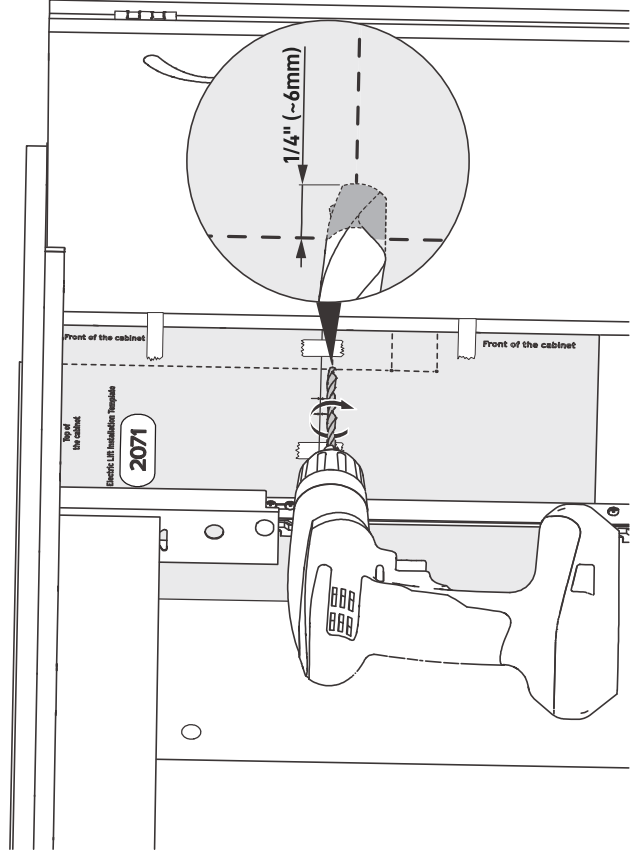
# Top of the cabinet

## Electric Lift Installation Template

2071

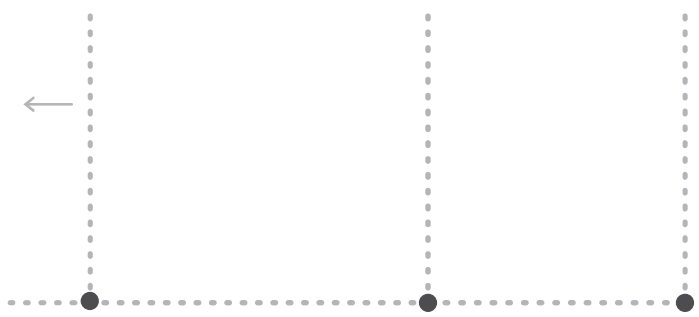
**NOTE: THIS TEMPLATE IS COMPRISED OF TWO PIECES OF 8 1/2 x 11 INCH PAPER.**

Align arrows on Page 1 with arrows on Page 2 and tape together to create the full-sized template.



Position the template inside the cabinet as shown. The top edge of the template paper should touch the top panel of the cabinet, and the front edge of the template paper should be even with the front edge of the right-hand side panel of the sewing well. Tape the template in place to prevent it from shifting as you drill.





Drill pilot holes **NO DEEPER THAN 1/4"** into the panel.

**DO NOT DRILL ALL THE WAY THROUGH THE PANEL!**

Once your pilot holes are drilled, remove the template paper and use the provided screws (3) to mount the Vertical Programmable Controller.

Front of the cabinet