

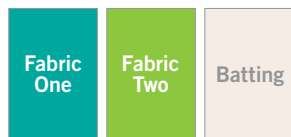


GO!® Towel Topper

Item Number: 55641

How to Assemble & Sew GO! Towel Topper:

Step 1



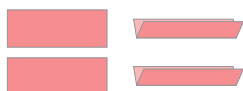
Cut two 11¼" x 7½" rectangles of fabric and one 11¼" x 7½" rectangle of batting.

Step 2



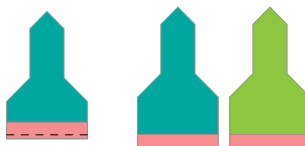
Fold each fabric and batting rectangle individual to 11¼" x 3¾". Position fabrics on the die with fold placed on the guideline. Then place batting on top in the same manner. Place mat on top and cut.

Step 3



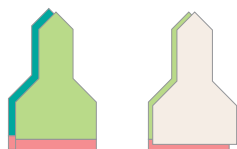
Cut and fold two 7" x 3" strips in half to 7" x 1½", wrong sides together to form Towel Topper trim.

Step 4



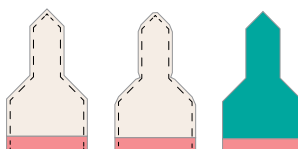
Align raw edge of one Towel Topper trim with bottom of one GO!® Towel Topper fabric piece. Sew together with ¼" seam allowance. Flip trim over and press. Repeat for remaining fabric piece.

Step 5



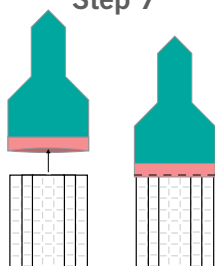
Layer fabric pieces right sides together aligning seams. Place GO! Towel Topper batting piece on top. Pin to hold in place.

Step 6



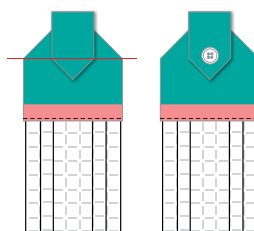
Sew ¼" around the edge leaving the bottom folded edge of the Towel Topper trim open. Trim corners and turn right side out so batting is in between fabric layers. Press edges flat.

Step 7



Finish by inserting desired towel material into the open edge about 1". Then sew close to the edge of the folded Towel Topper trim edge to secure.

Step 8



Fold over flap and align corners as shown. Add desired fastener.

Materials Needed

- Fabric One: 1 fat quarter
- Fabric Two: 1 fat quarter
- Batting: ¼ yd
- Towel Material: 20" x 14"
- Desired fastener

TIP The die is specially designed to cut one complete Towel Topper (2 fabric and 1 batting rectangles) in one pass through the cutter.

Fold each fabric and batting rectangle individually. Folding layers together will cause inaccurate cuts. Layer fabric on die first, with batting on top. Use GO! Strip Cutter-3" (2½" finished) (55084) to cut Towel Topper trim pieces.

Pair GO! Towel Topper Die with June Tailor® Hanging Towel Kit (JT-1449) for easy construction. Just add fabric, thread and desired fastener.