



GO!® Quilted Trucker Hat by Chris Marchini

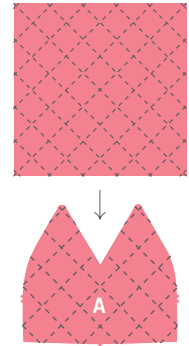
Item Number: 55648

How to Cut GO! Quilted Trucker Hat:

Read through all the pattern instructions fully before you begin cutting your fabric.

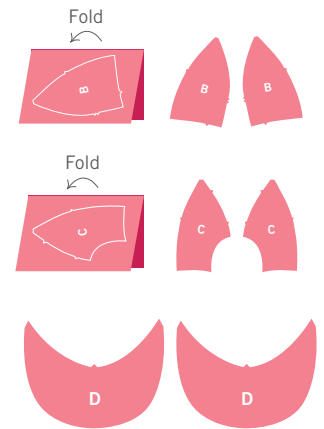
Front Panel:

- Place one 10" square that has been pre-quilted with the foam stabilizer right side up on shape A.
- Note: We've given extra room on all sides as items may shrink during the quilting process, and to allow for minor adjustments to "fussy cut" any design on the front panel.



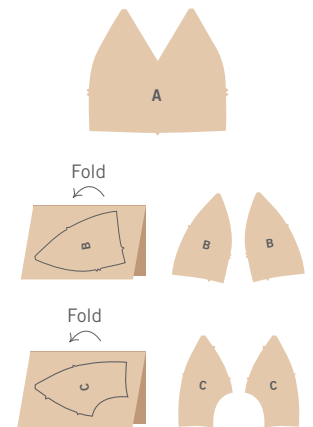
Outer Shell:

- Cut one 8" x 10" piece of pre-interfaced fabric. Fold in half widthwise, wrong sides together, to form an 8" x 5" rectangle. Place on shape B to cut two Hat Side pieces that are mirror image.
- Cut one 8" x 10" piece of pre-interfaced fabric. Fold in half widthwise, wrong sides together, to form an 8" x 5" rectangle. Place on shape C to cut two Hat Side pieces that are mirror image.
- Cut two 8½" x 7" rectangles of outer shell fabric on shape D to cut two Hat Brim pieces.



Lining:

- Cut one 9" square of lining fabric and place on Shape A to cut one Hat Front Panel piece.
- Cut one 8" x 10" rectangle of lining fabric. Fold in half widthwise, wrong sides together, to form an 8" x 5" rectangle. Place on shape B to cut two Hat Side pieces that are mirror image.
- Cut one 8" x 10" rectangle of lining fabric. Fold in half widthwise, wrong sides together, to form an 8" x 5" rectangle. Place on shape C to cut two Hat Side pieces that are mirror image.



Straps:

- Use a Rotary Cutter or the GO! Strip Cutter-1¼" (¾" Finished) (55109) die to cut two 1¼" x 7½" strips of pre-interfaced fabric.



Brim Lining:

- Cut one 8" x 6" rectangle of an Ultra-Firm stabilizer and place on shape E to cut one Brim Lining piece.

