

# GO! *BOLT*<sup>™</sup>



GO! Bolt Die Catcher  
shown sold separately.

# MAKE THE CUT.<sup>™</sup>

Instructions & Tips for Use



@accuquilt<sup>®</sup>



# WELCOME TO OUR FAMILY.

Because you purchased the AccuQuilt GO! Bolt™ electric fabric cutter, we know you're as passionate about quilting as we are. Welcome! It's safe to say you're excited about saving time, fabric, effort and space. That being said, please keep this handy set of instructions and safety tips for your reference.

**Please read carefully to learn how to best use and maintain your new AccuQuilt GO! Bolt™ electric fabric cutter.**

## NEW TO FABRIC DIE CUTTING?

- Take a little time to get acquainted with GO! Bolt. As you develop great die-cutting skills, you'll see optimal use of your fabric.
- Check the orientation of the lengthwise grain before each cut.
- Practice cutting with scrap fabric.
- Test cut one shape before cutting many shapes to ensure fabric orientation is correct.

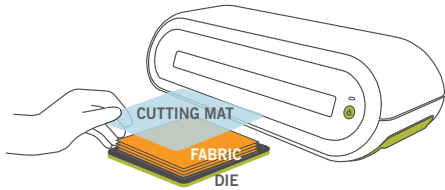
# How to operate your GO! Bolt™ cutter

## 1. Place.

Layer die (with foam side up), fabric and cutting mat.

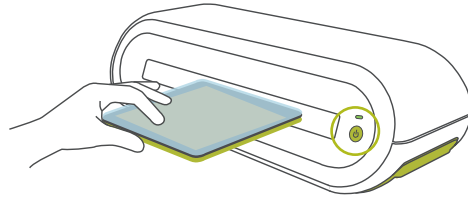
**TIP:** You can cut two 5" wide dies side by side at the same time.

For most accurate cuts, place fabric on the lengthwise grain (see page 4). To conserve fabric, cover only shape to be cut, not entire die board.



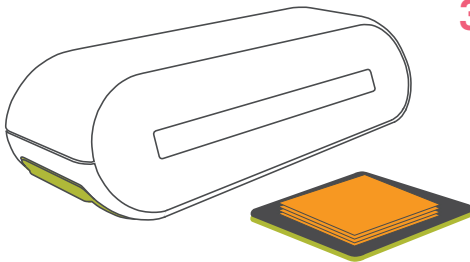
## 2. Press.

Plug in power cord. Press green power button to turn on cutter. Push die, fabric and mat firmly against roller. The pieces will automatically move through cutter.



## 3. Done!

Remove mat and perfectly cut shapes! Repeat process. Press power button to turn off cutter when finished.



## BUTTON FUNCTIONALITY



Press the power button once to turn the cutter on. The green power light will display.



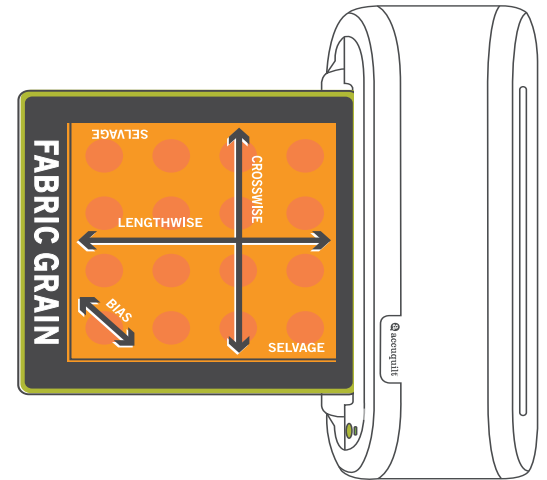
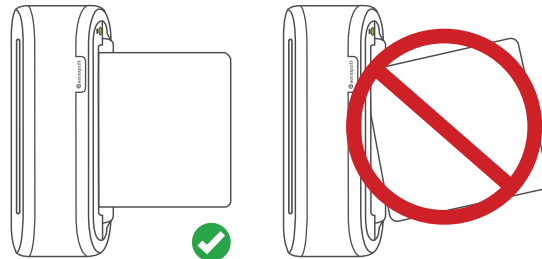
Press the power button once to turn the cutter off. The green power light will turn off.

## OPERATING INSTRUCTIONS

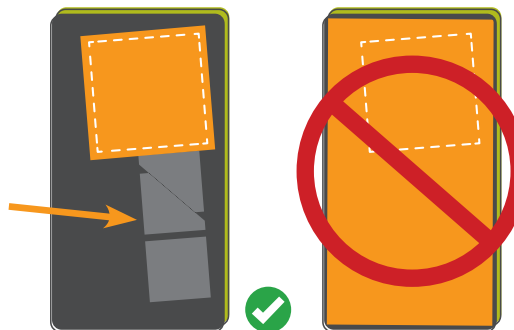
- Keep hands and fingers away from rollers when operating.
- Do not allow children to operate unattended.
- Use the cutter on a flat, level and stable surface.
- Do not place anything (fingers, scissors, etc.) other than GO! dies with fabric and cutting mats into the cutter.
- Do not cut off ground pin or modify the cord and plug in any way. When using the cord and plug, plug into a grounded outlet only.
- Handle foam-covered die blades with care.
- Always use a cutting mat with dies so you do not cut into steel roller. Doing so will damage dies and void the warranty.
- This product is intended for indoor use only. Do not use this cutter in, or near, water (or other liquids).

# Follow these steps to get perfect cuts every time

- 1. GO WITH THE GRAIN** – For most accurate cuts, be sure you're cutting on the lengthwise grain (straight of grain) as the fabric goes through the cutter. This is important because if you don't cut on the lengthwise grain, your fabric may stretch as it's being cut causing inaccurate cuts.
  - The lengthwise grain runs parallel to the selvage edge—the bound edges of fabric that prevents unraveling or fraying—so place your fabric on the die with the selvage edge facing you before running it through the cutter.
  - Cutting on the lengthwise grain is particularly important when cutting geometric shapes and Block on Board® dies, dies with all the shapes needed to create a block on one die.
- 2. PRE-CUT FABRIC STRIPS** – To use the AccuQuilt GO! Bolt™ electric fabric cutter, first pre-cut strips of fabric approximately ½" wider than the shape you want to cut.
  - These strips can be layered or fan-folded to cut multiple shapes in one pass.
- 3. INSERT DIE STRAIGHT** – Insert the die straight into the mouth of the cutter so the front edge of the die touches the roller evenly as it goes through the cutter. Do not angle the die.



**4. SAVE YOUR FABRIC!** – When laying your fabric on the die, only place it right over the shapes you wish to cut. There is no need to cover the entire board. **Two Tone™ Foam makes it easy to align fabric just over the edge of the shape so you can save fabric.**



**5. CUT UP TO 6 LAYERS AT A TIME**

The GO! Bolt electric fabric cutter cuts a wide variety of fabric in a varying number of layers. Always begin with fewer layers and build up.

MATERIAL	MAXIMUM # OF LAYERS*					
	1	2	3	4	5	6
Cotton	[Bar spanning 1 to 6]					
Cotton with Fusible Web	[Bar spanning 1 to 4]					
Batiks	[Bar spanning 1 to 6]					
Fleece*	[Bar spanning 1 to 2]					
Flannel*	[Bar spanning 1 to 2]					
Denim	[Bar spanning 1 to 2]					
Leather	[Bar spanning 1 to 2]					
Wool	[Bar spanning 1 to 2]					
Batting	[Bar spanning 1 to 2]					
Felt	[Bar spanning 1 to 2]					
Silk	[Bar spanning 1 to 6]					

\*We do not recommend using the GO! Bolt Cutter to cut GO! Rag Dies or GO! Project dies that require cutting quilted layers of fabric.

Scan this QR code with your smart phone device to find the list of select GO! dies.

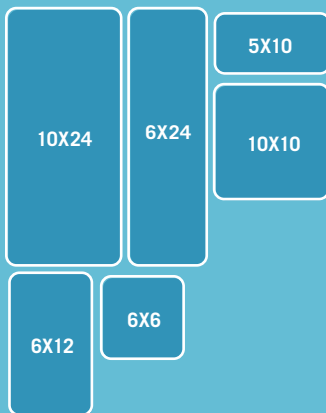


**FABRIC TIPS**

- Cut shapes from fabric remnants and scraps. Great for using up stash!
- For fast appliqué, apply fusible web to fabric then cut.
- Use good quality fabric to reduce fabric stretch.
- We recommend that you test cut your fabric first. AccuQuilt does not take responsibility for fabric cutting errors.

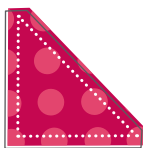
## DIE TIPS

- Threads may remain after cutting with some fabrics. Snip with scissors.
- As long as the desired shape is covered, you can use a different size mat than your die board.
- The GO! die sizes listed below are compatible with the GO! Bolt electric fabric cutter:



## GO! dies designed to save you time

AccuQuilt offers many different die shapes and sizes designed with features to save you time and to give you the most accurate cuts. Visit [accuquilt.com](http://accuquilt.com) to see our wide selection of piecing and appliqué dies to use with your GO! Bolt electric fabric cutter.



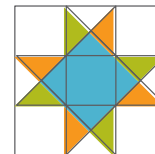
**Dog-eared  
Corners & 1/4"  
Seam Allowance:**  
More time  
quilting and  
no time clipping!



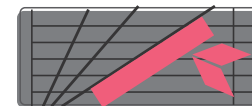
**Notches:**  
Line up the  
notches for  
accurate cuts  
and easy  
piecing of  
curvy  
quilt designs



**Two Tone™ Foam:**  
Makes it quick  
and easy to  
align fabric over  
blades so you  
can save fabric



**Block on Board®  
(BOB®):**  
Create a  
complete  
block with  
all the shapes  
on one die  
board



**Strip Cutters  
with Angled  
Guidelines:**  
Silkscreened  
guidelines make  
it easy to align  
fabric & sub-cut  
shapes to the  
sizes you need

## GO! CUTTING MATS

GO! cutting mats are specially made for GO! cutters and must be used with your GO! dies to cut your fabric. Place mat on top of die and fabric before moving the die through cutter.

- Store mats flat and avoid direct sunlight.
- Replace mat when cutting performance of die is reduced or mat shows excessive wear.
- Do not use warped mats.
- Extend the life of your mat by alternating the sides when cutting.

## CARING FOR YOUR GO! BOLT ELECTRIC FABRIC CUTTER & DIES

For best results, keep your GO! Bolt electric fabric cutter clean and lint-free. To clean the cutter, use a clean, soft, dry cloth. Use canned air to clean lint from rollers. Avoid abrasives, solvents and spray cleaners.

Use a die pick or tweezers to remove scraps of fabric from tight areas between die blades. Use a lint roller to remove lint and tiny scraps from foam side of die. Organize and protect your GO! Bolt electric fabric cutter and dies with AccuQuilt GO! storage solutions.

---

**WANT MORE AccuQuilt? Visit our site at [accuquilt.com](https://www.accuquilt.com) for our full product line, project ideas and selection of patterns.**

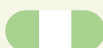
## STATUS LIGHT INDICATIONS



**No lights:** Cutter is off or is not plugged in.



**Green solid:** Cutter is activated and ready for use.



**Green flashing (Slow):** Cutter is in the process of cutting fabric. Keep hands and other items clear until cutting is complete.



**Green flashing (Fast):** Cutter will automatically turn off in 5 seconds.



**Red solid:** The cutter is in manual reverse mode. Proceed to step 2 in the instructions below.



**Red flashing (Slow):** The cutter is reversing to clear a die jam. This happens automatically when the cutter detects a jam.



**Red flashing (Fast):** The cutter has shutdown as a safety precaution. Proceed to step 3 in the instructions below.

## COMMON ISSUES

The most common reason a die will jam in the cutter is due to trying to cut too many layers of fabric with the die. We recommend always starting with fewer layers and building up. In addition, it's a good idea to test cut with scrap fabric first before starting your project.

## RESETTING YOUR CUTTER TO CLEAR A DIE JAM

1. Push the power button once to turn off the cutter. Push the button again. The cutter will turn on in manual reverse mode (solid red light).
2. Press and hold the power button to reverse the rollers and clear the die jam. Continue holding down the button until the die can be removed from the cutting area. Once the die is removed, the red light will start flashing rapidly.
3. Press the power button off and then back on to return to normal cutting mode.

If you are unable to clear the die jam, call AccuQuilt Customer Support at 888.258.7913 for assistance.

# GO! *BOLT*<sup>™</sup>

## NEED HELP?

AccuQuilt Customer Support available  
8 a.m.-5 p.m. CST, Monday-Friday  
**888.258.7913**  
[accuquilt.com/gobolt](http://accuquilt.com/gobolt)



 **accuquilt**<sup>®</sup>

Patents Pending ©2026 AccuQuilt 55918UG-R1

Find the full line of AccuQuilt<sup>®</sup> products  
when you visit [accuquilt.com](http://accuquilt.com).



Scan this QR code with  
your smart phone device.

## LIMITED ONE-YEAR WARRANTY

We promise your AccuQuilt GO! Bolt<sup>™</sup> electric fabric cutter will be free from defects in material or workmanship when used as directed. If you experience a manufacturing defect within one year of purchase, AccuQuilt will repair or replace the cutter at no charge. Improper use, excessive wear caused by commercial use, and/or damage caused by the user will void the warranty. This warranty covers only the cutting unit and does not include cutting mats or dies. GO! dies are guaranteed for one year. To receive a replacement unit, return the cutter to place of purchase.

Register your new GO! Bolt  
electric fabric cutter today.  
Scan the QR code above or go  
to [accuquilt.com/registerproduct](http://accuquilt.com/registerproduct).  
By registering your product,  
you'll be able to take full  
advantage of all the services  
that AccuQuilt offers.

